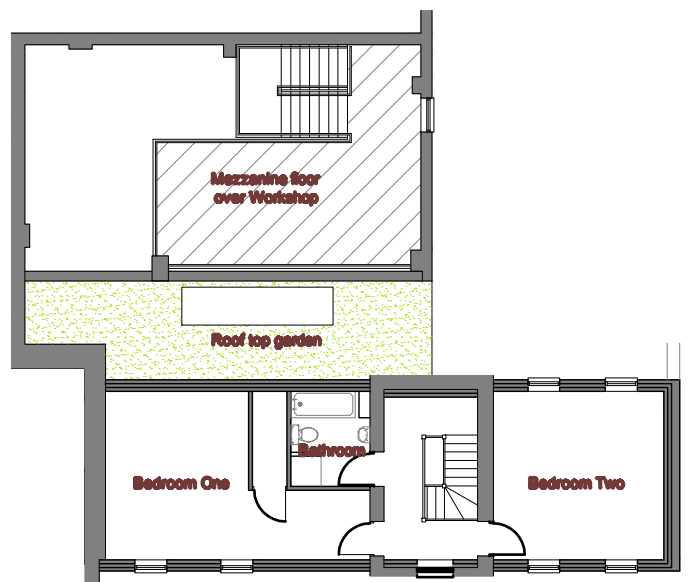
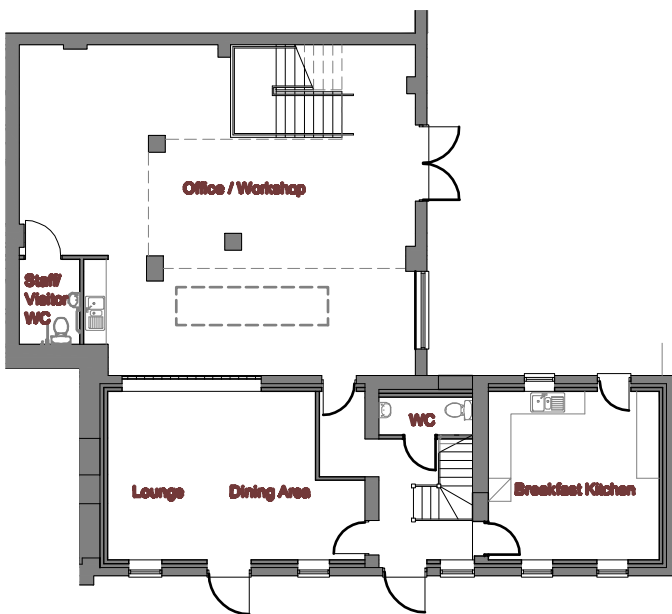


# Barn Hill Farm



**Courtyard View Barn**



## Plot Seven

A two Bedroom Barn with large office/workshop

### Ground Floor

Lounge/Dining 7.00m(max) x 4.46m (22'11" x 14'7")

Kitchen/Breakfast 4.52m x 4.46m (14'9" x 14'7")

Office/Workshop 10.47m x 8.75m (34'4" x 28'9")

Utility

WC

### First Floor

Bedroom One 7.00m(max) x 4.46m (22'11" x 14'7")

Bedroom Two 4.51m x 4.46m (14'9" x 14'7")

Mezzanine 5.85m x 7.00m (19'5" x 23'2")

Bathroom

