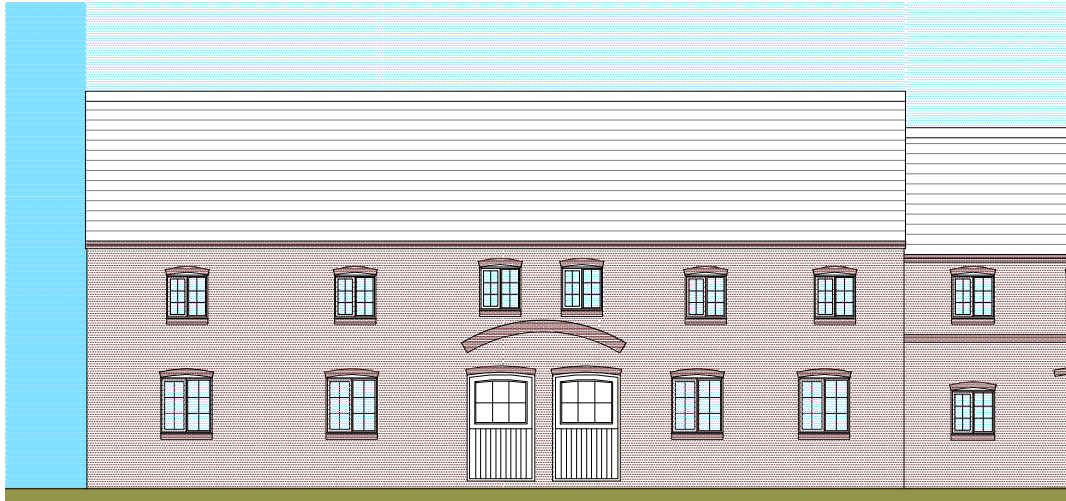
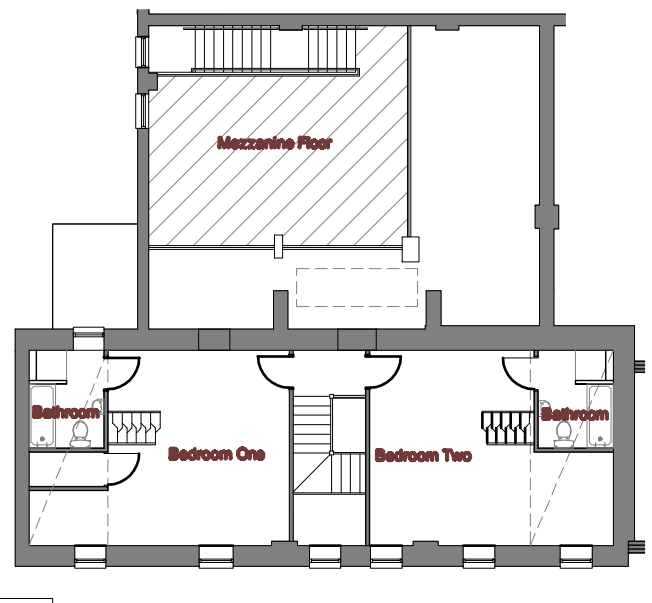
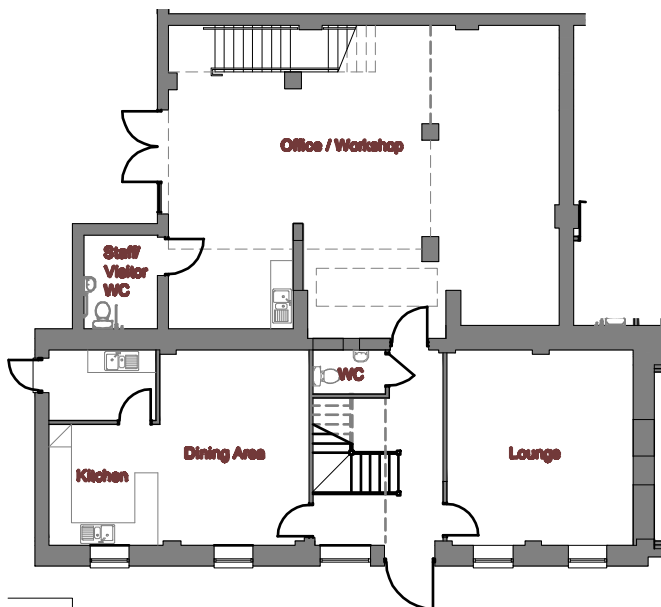


# Barnhill Moat Farm



**Courtyard View Barn**



## Plot Six

A two Bedroom Barn with large office/workshop

### Ground Floor

Lounge 5.17m x 4.92m (16'11" x 16'1")

Dining 5.17m x 3.95m (16'11" x 12'9")

Kitchen 3.16m x 2.93m (10'5" x 9'7")

Utility

WC

Office/Workshop 10.32m x 8.27m (33'8" x 27'1")

### First Floor

Bedroom One 6.88m(max) x 5.17m (21'11" x 16'11")  
plus en-suite & sleeping gallery

Bedroom Two 6.45m x 5.17m (20'11" x 16'11")  
plus en-suite & sleeping gallery

Bathroom

Mezzanine Floor 5.91m x 6.93m (19'5" x 22'7")

